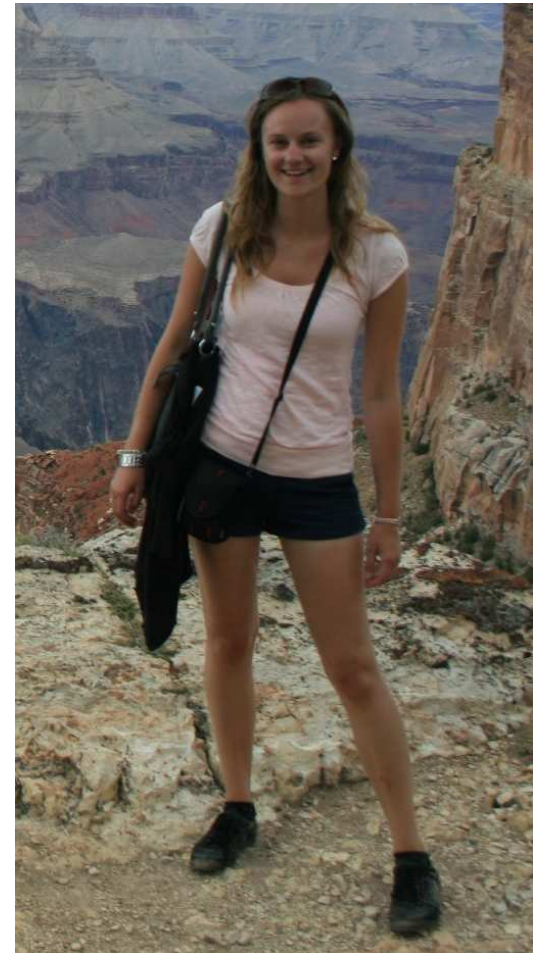


**ESR9 – UCL Institute of Child Health
London, UK**

Chantal Duurland, MSc

**EUTRAIN MEETING
23 September 2013
Utrecht, NL**



Project overview



Main Question: Are some regulatory T cells involved in making autoimmune diseases worse?

Focus : CD161+ Treg

- Suppressive *in vitro* yet pro-inflammatory (Pesenacker et al., Blood, 2013)
- CD161+ Treg are highly enriched within the SF of JIA patients

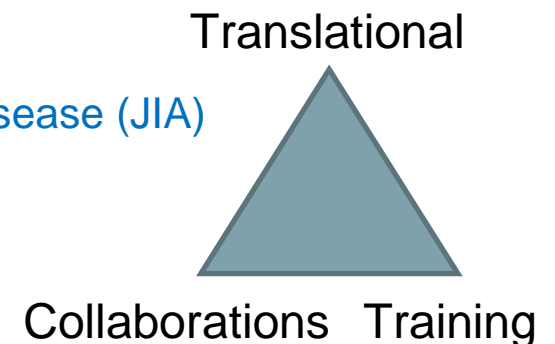
Q1: Do CD161 Treg have a 'typical' Treg signature?

- Further characterization of CD161+ Treg protein signature
- Transcriptional differences between CD161+ and CD161-

Q2: Which signals direct the cytokine production by CD161+ Treg?

Q3: What is the function of CD161 expressing Treg in health and disease (JIA)

.....**Alignment with EUTRAIN**



Planning next year – training



- BSI Summer school 2013 in Newcastle, UK
- University College London (UCL)
 - Bioinformatics course
 - Statistics course
 - Personal development courses
- Analysis and interpretation of RNA sequencing data
- EUREKA 2014
- My hopes for a secondment:
 - Signalling?
 - Q2: Which signals direct the cytokine production by CD161+ Treg
 - Functional assays?
 - Q3: What is the function of CD161 expressing Treg in health and disease (JIA)